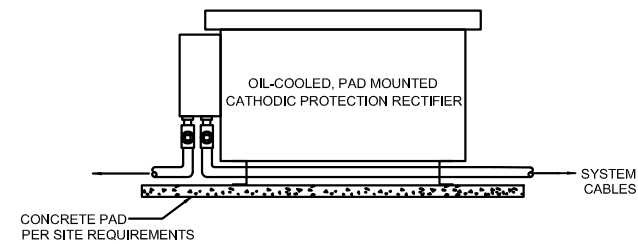


1 ANODE JUNCTION BOX  
DET2

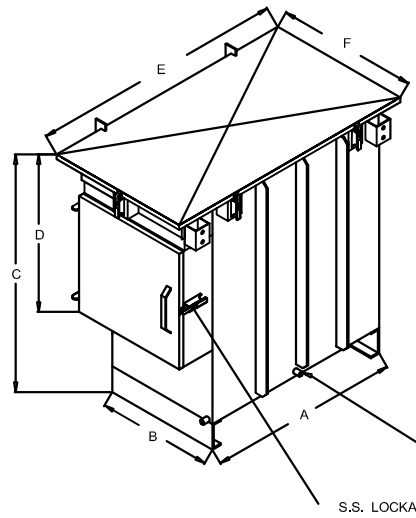
NOTE:  
INSTALL JUNCTION BOX WITH UNISTRUT OR POST ANCHORED IN CONCRETE



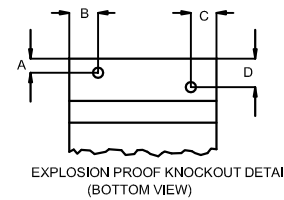
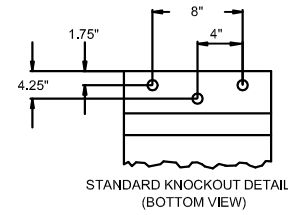
3 TYPICAL OIL-COOLED RECTIFIER INSTALLATION  
DET2

- NOTES:
- RECTIFIER IS TO BE LOCATED NEAR THE STORAGE TANKS RECEIVING CATHODIC PROTECTION IN NON-CLASSIFIED AREA.
  - RECTIFIER UNIT IS OIL FILLED, 120/240 VAC, 60 HZ. SERVICE, SINGLE PHASE INPUT WITH DC OUTPUT AS INDICATED. UNIT IS NOT RATED FOR HAZARDOUS (EXPLOSION PROOF) AREAS.
  - THE REQUIREMENT OF AN AC SAFETY SWITCH WILL DEPEND ON ELECTRICAL CODE AND APPROVED LOCATION OF RECTIFIER
  - THE RECTIFIER ENCLOSURE SHALL BE GROUNDED PER NEC AND APPLICABLE LOCAL/SITE REQUIREMENTS

ALL SIZES ARE APPROXIMATE  
GALVANIZED STEEL - NEMA 8



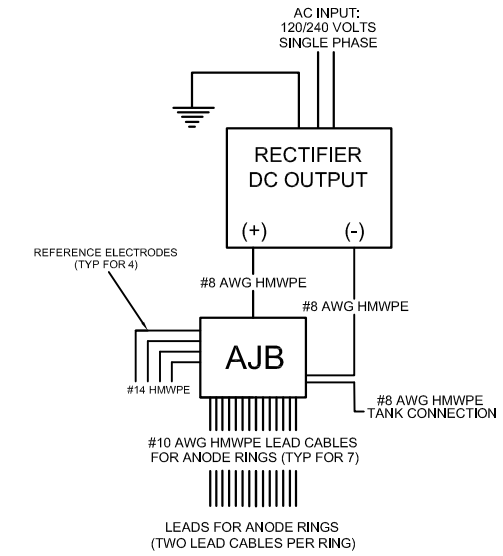
2 TYPICAL OIL-COOLED RECTIFIER CABINET  
DET2



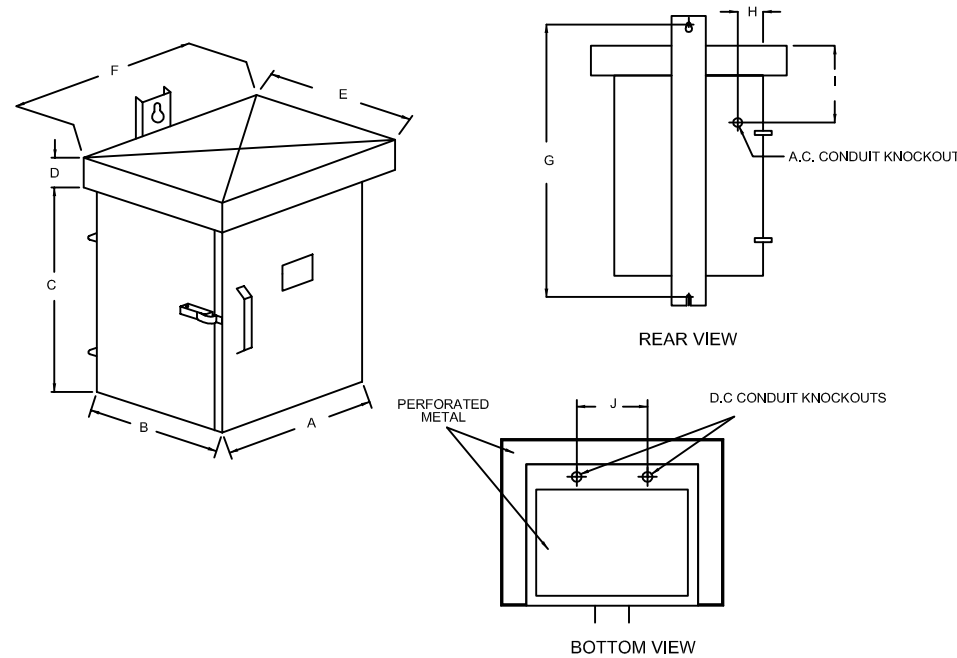
- NOTES:
- REQUIREMENTS FOR CONCRETE PAD TO BE DETERMINED.
  - GROUNDED REQUIREMENTS BY SITE.

CASE SIZE	OIL CAPACITY GALLONS	CASE DIMENSIONS					
		A	B	C	D	E	F
MAO	20	18	15	24 1/2	24	26 3/4	17 3/4
AO	55	30	18 1/4	34	24	39 3/4	22
BO	110	36	21	46	24	46	25
CO	170	48	21	52	24	58 1/4	25
DO	213	60	21	52	24	70 1/4	25
EO	300	72	21	52	24	82 1/4	25
FO	465	84	30 1/2	64 1/2	24	93 1/2	34
GO	600	84	30 1/2	64 1/2	24	93 1/2	34

CASE SIZE	DIMENSIONS			
	A	B	C	D
MAO	3	1 3/4	4	4 1/4
AO	3	2 3/4	4	4 1/4
BO CO DO EO	3	3	4 1/2	4 1/4
FO GO	3	3	4 1/2	4 1/4

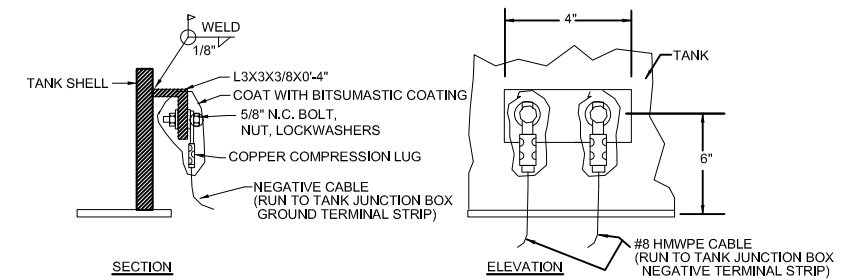


5 ABOVE GROUND STORAGE TANKS SYSTEM SCHEMATIC  
DET2



4 TYPICAL AIR-COOLED RECTIFIER CASE  
POLEMOUNT "D" TYPE  
DET2

CASE SIZE	DIMENSIONS - INCHES									
	A	B	C	D	E	F	G	H	I	J
A	14	12	20	3	15	20	26 1/4	3	7 1/2	6
B	17	15	24	3 1/2	18	23	32	3	9	8
C	22	21	24	3 1/2	24	28	32	3	9	10
D	28	22	23	3 1/2	25	34	32	3	9	12
E	34	28	27	5	33	44	35	3	9	10



6 SYSTEM GROUND CONNECTION  
DET2

TYPICAL-NOT FOR CONSTRUCTION  
CATHODIC PROTECTION SYSTEM DETAIL  
ABOVE GROUND STORAGE TANK

SCALE: NTS APPROVED BY: DRAWN BY: NAS  
DATE: 05/21/08 REVISED:

**MATCOR**

P.O. BOX 687 DOYLESTOWN, PA 18901, U.S.A. (215)-348-2974 DRAWING NO.: 0000-00-DET2