

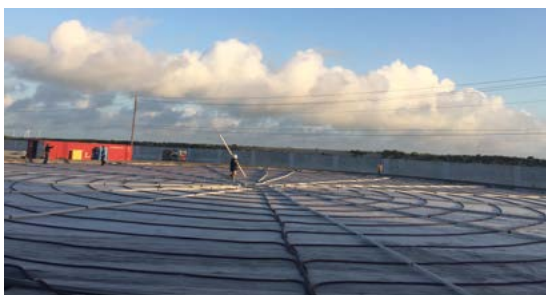
# Power Cable

## for Cathodic Protection Systems

The quality of the power cable is instrumental to any cathodic protection system. Power cable used for cathodic protection systems must be highly corrosion resistant and capable of withstanding the rigors of the environments to which they are exposed.

MATCOR Power Cable, which is available in many different sizes as well as jacket compositions, provides the dependable results that you demand.

Our High Molecular Weight Polyethylene (HMWPE) is suitable for most environments. In high chlorine generation environments however we recommend our KYNAR/HMWPE or HALAR/HMWPE cables which are dual extruded highly chlorine resistant power cables. MATCOR also offers other Special Order Cables as shown to the right.



*MATCOR Tank Ring Anode Installation*



*MATCOR Cathodic Protection Power Cables are available in many configuration.*

### SPECIAL ORDER CABLES

In addition to the cables indicated on the back of this page, the following power cables are available:

- EPR/CSPE (HYPALON)
- Aluminum Conductor
- PVC Insulation, PVC Jacketed
- XLPE Insulated
- Armored Insulation
- Sizes up to 750 MCM
- Non-Standard insulation coloring

### OTHER CONSIDERATIONS

- Some cable types and sizes may require minimum order quantities depending on stock availability
- Kynar®/Polyolefin cables available tinned/untinned conductor; Kynar insulation irradiated/ non-irradiated

### BENEFITS

- Reliable
- Highly corrosion resistant
- Options for chlorine or harsh environments
- Special order cables available

# Power Cable

for Cathodic Protection Systems

Size AWG	Stranding	Primary Insulation Thickness Mils	Type	Secondary Jacket Thickness Mils	Type	Approx. OD Inches	Approx. Net. Wt. Lbs./Linear Ft.
14	7	30	HMWPE	N/A	N/A	.13	.029
12	7	100	HMWPE	N/A	N/A	.29	.065
10	7	110	HMWPE	N/A	N/A	.34	.080
8	7	110	HMWPE	N/A	N/A	.38	.092
6	7	110	HMWPE	N/A	N/A	.41	.128
4	7	110	HMWPE	N/A	N/A	.46	.185
2	7	110	HMWPE	N/A	N/A	.52	.272
1/0	19	125	HMWPE	N/A	N/A	.63	.415
2/0	19	125	HMWPE	N/A	N/A	.67	.509
4/0	19	125	HMWPE	N/A	N/A	.78	.771
DUAL EXTRUSION SPECIAL PURPOSE CABLE							
8	7	20 or 40	Halar	Up to 110	HMWPE	.41 max	.092 max
6	7	20 or 40	Halar	Up to 110	HMWPE	.44 max	.128 max
4	7	20 or 40	Halar	Up to 110	HMWPE	.49 max	.185 max
2	7	20 or 40	Halar	Up to 110	HMWPE	.55 max	.272 max
8	7	20	Kynar®	Up to 110	HMWPE	.41 max	.093 max
6	7	20	Kynar	Up to 110	HMWPE	.44 max	.130 max
4	7 or 19	20	Kynar	Up to 110	HMWPE	.49 max	.187 max
2	7 or 19	20	Kynar	Up to 110	HMWPE	.55 max	.275 max
1/0	19	20	Kynar	Up to 110	HMWPE	.68 max	.515 max

## GENERAL SPECIFICATIONS

Conductor, Insulations: per IPCEA  
S-61-402, ASTM D1248, NEC

**BRAND** ENERGY & INFRASTRUCTURE SERVICES  
MATCOR is a Brand Energy & Infrastructure Services Company.

### REGIONAL OFFICES

OK 405 293 9777  
TX 281 558 2600  
CO 303 407 2709  
WY 307 362 7992



+1 215 348 2974  
matcorsales@matcor.com  
matcor.com